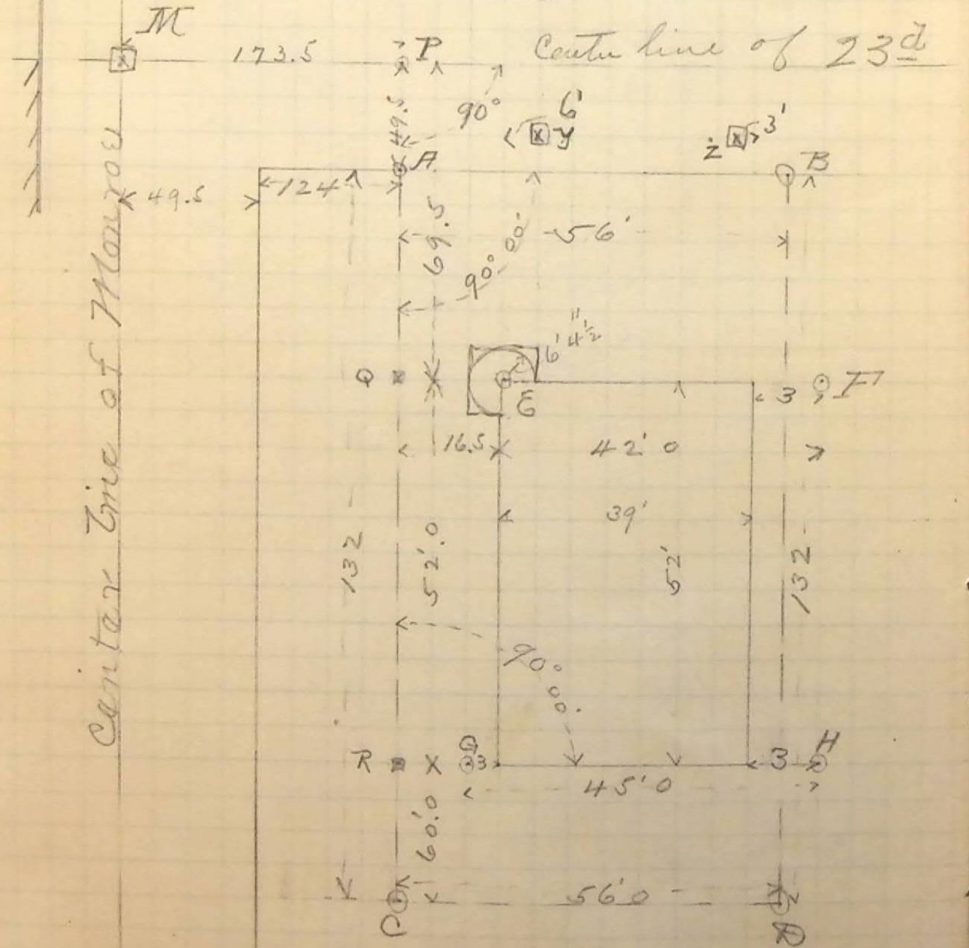


Survey to locate Ranch Fire Station

Building - Truss at M - Sigs at N -
 N - S at P 173.5 E - Then with Truss
 at T, A, Q R & C successively - I
 set points at joints as shown - E was -
 sibly - Setting hubs & ticks at all points
 marked thus ⊙



Oct 9th 91
 Center line of Quarry Row

March - 1892 -

Set stakes on curb line for
 front platform as follows -

3.60	4392.37	4392.70
3.17	9492	5.70 93.60

3.40 93.00 { Elev. top of Stak
 at Z
 3.92 93.00 { ditto
 at BY -

Oct 17th 91 - Set property grades and
 and stake at E, F, G, H, on level of
 floor - Level notes as follows -

	H.I.	ROD	
3pm	0.20	99.82	4499.68 { On Window Sill - S.E. Cor 24 th + Marrow
	6.60	98.49	9.99 91.89 { W. End of N. Arch window
			5.80 92.69 = Property Grade Elev. West end of lot
			4.96 93.53 = " " " East "
			4.73 93.76 = Elev floor of building being 0.5 above property grade at point 18' W. of E. line of building